

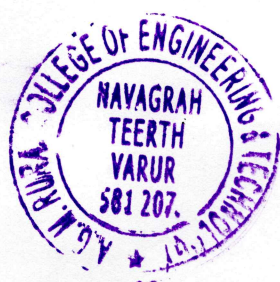
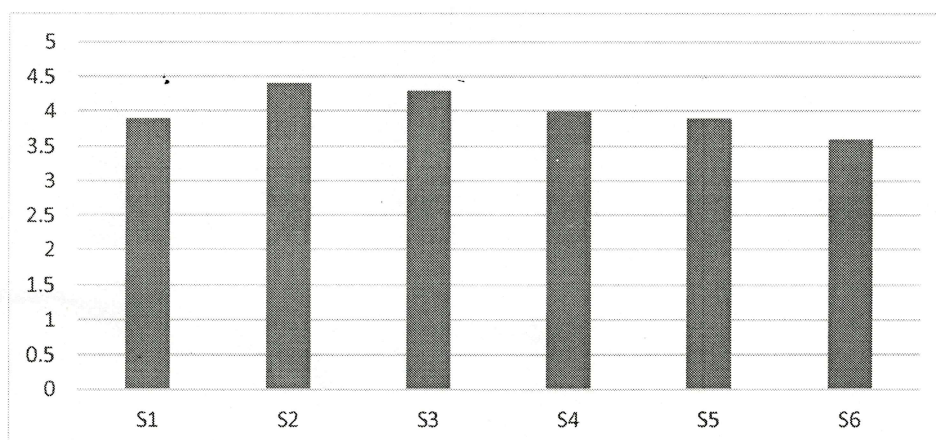


Faculty feedback Analysis on Curriculum

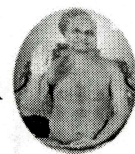
| | |
|---------------|-------------------|
| Department | Civil Engineering |
| Academic Year | 2022-2023 |

Rating Score: Excellent (5), Very Good (4), Good (3), Average (2), Poor (1)

| S.No | Statements | 5 | 4 | 3 | 2 | 1 | AVG |
|------|---|---|---|---|---|---|-----|
| 1 | Curriculum relevance to the course | 5 | 2 | 1 | 1 | 1 | 3.9 |
| 2 | Course content followed by corresponding reference books/materials | 7 | 1 | 1 | 1 | 0 | 4.4 |
| 3 | The course/syllabus has good balance between theory and laboratories. | 6 | 2 | 1 | 1 | 0 | 4.3 |
| 4 | The course/syllabus of this subject increased my knowledge and perspective in the subject | 4 | 3 | 2 | 1 | 0 | 4 |
| 5 | The Course/Program of studies carries sufficient number of optional subjects. | 4 | 3 | 2 | 0 | 1 | 3.9 |
| 6 | Organization support for research activities, paper publication etc | 4 | 2 | 1 | 2 | 1 | 3.6 |



PRINCIPAL
A.G.M Rural College of
Engineering And Technology
Navagrah Teerth, VARUR-581 207

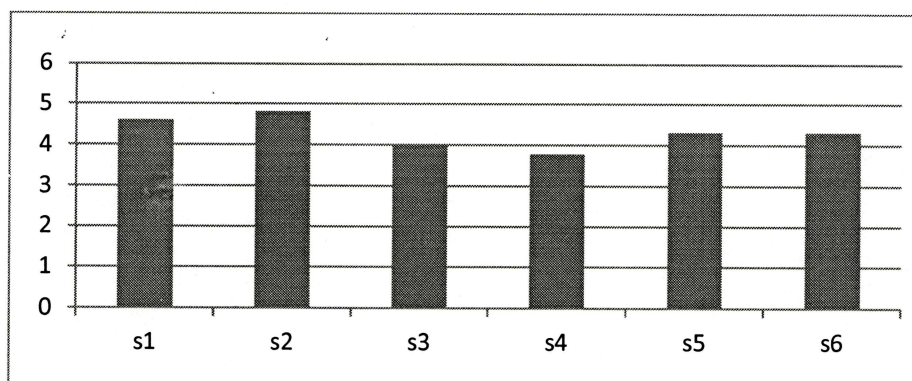



Faculty feedback Analysis on Curriculum

| | |
|---------------|----------------------------------|
| Department | Computer science and engineering |
| Academic Year | 2022 -2023 |

Rating Score: Excellent (5), Very Good (4), Good (3), Average (2), Poor (1)

| S.No | Statements | 5 | 4 | 3 | 2 | 1 | AVG |
|------|---|---|---|---|---|---|-----|
| 1 | Curriculum relevance to the course | 7 | 2 | 1 | 0 | 0 | 4.6 |
| 2 | Course content followed by corresponding reference books/materials | 8 | 2 | 0 | 0 | 0 | 4.8 |
| 3 | The course/syllabus has good balance between theory and laboratories. | 6 | 1 | 1 | 1 | 1 | 4 |
| 4 | The course/syllabus of this subject increased my knowledge and perspective in the subject | 6 | 1 | 0 | 1 | 2 | 3.8 |
| 5 | The Course/Program of studies carries sufficient number of optional subjects. | 7 | 1 | 1 | 0 | 1 | 4.3 |
| 6 | Organization support for research activities, paper publication etc | 7 | 1 | 1 | 0 | 1 | 4.3 |




PRINCIPAL
A.G.M Rural College of
Engineering And Technology
Navagrah Teerth, VARUR-581 207



S.D.M Jainmatt Trust®

A.G.M RURAL COLLEGE OF ENGINEERING AND TECHNOLOGY, VARUR

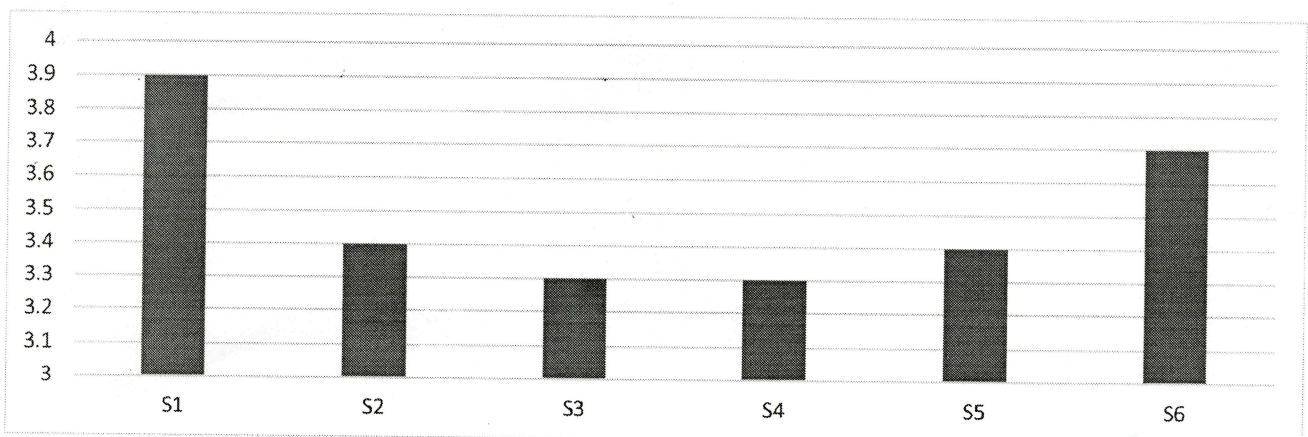


Faculty Feedback Analysis on Curriculum

| | |
|---------------|---|
| Department | Electronics and Communication Engineering |
| Academic Year | 2022-2023 |

Rating Score: Excellent (5), Very Good (4), Good (3), Average (2), Poor (1)

| S.No | Statements | 5 | 4 | 3 | 2 | 1 | AVG |
|------|---|---|---|---|---|---|------|
| 1 | Curriculum relevance to the course | 5 | 2 | 1 | 1 | 1 | 3.90 |
| 2 | Course content followed by corresponding reference books/materials | 4 | 1 | 2 | 1 | 2 | 3.40 |
| 3 | The course/syllabus has good balance between theory and laboratories. | 2 | 3 | 2 | 2 | 1 | 3.30 |
| 4 | The course/syllabus of this subject increased my knowledge and perspective in the subject | 3 | 2 | 1 | 3 | 1 | 3.30 |
| 5 | The Course/Program of studies carries sufficient number of optional subjects. | 4 | 1 | 2 | 1 | 2 | 3.40 |
| 6 | Organization support for research activities, paper publication etc | 5 | 1 | 1 | 2 | 1 | 3.70 |



(Handwritten Signature)
A.G.M Rural College of
Engineering And Technology
Navagrah Teerth, VARUR-581 207

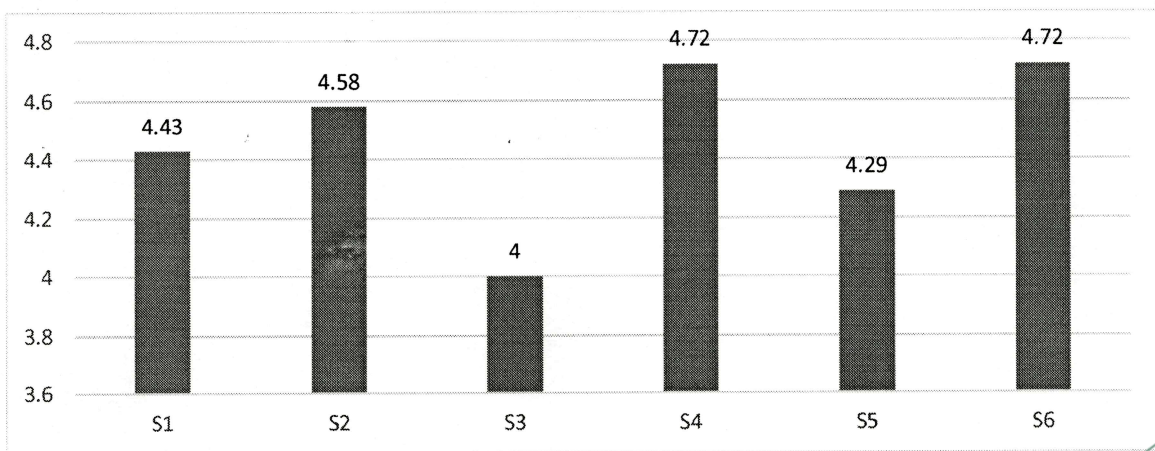


Faculty feedback Analysis on Curriculum

| | |
|---------------|--|
| Department | Electrical and Electronics Engineering |
| Academic Year | 2022-23 |

Rating Score: Excellent (5), Very Good (4), Good (3), Average (2), Poor (1)

| S.No | Statements | 5 | 4 | 3 | 2 | 1 | AVG |
|------|---|---|---|---|---|---|------|
| 1 | Curriculum relevance to the course | 4 | 2 | 1 | 0 | 0 | 4.43 |
| 2 | Course content followed by corresponding reference books/materials | 5 | 1 | 1 | 0 | 0 | 4.58 |
| 3 | The course/syllabus has good balance between theory and laboratories. | 3 | 2 | 1 | 1 | 0 | 4 |
| 4 | The course/syllabus of this subject increased my knowledge and perspective in the subject | 6 | 1 | 0 | 0 | 0 | 4.72 |
| 5 | The Course/Program of studies carries sufficient number of optional subjects. | 5 | 2 | 0 | 0 | 0 | 4.29 |
| 6 | Organization support for research activities, paper publication etc | 3 | 3 | 1 | 0 | 0 | 4.72 |



PRINCIPAL
A.G.M Rural College of
Engineering And Technology
Navagrah Teerth, VARUR-581 207



S.D.M Jainmatt Trust®

A.G.M RURAL COLLEGE OF ENGINEERING AND TECHNOLOGY, VARUR

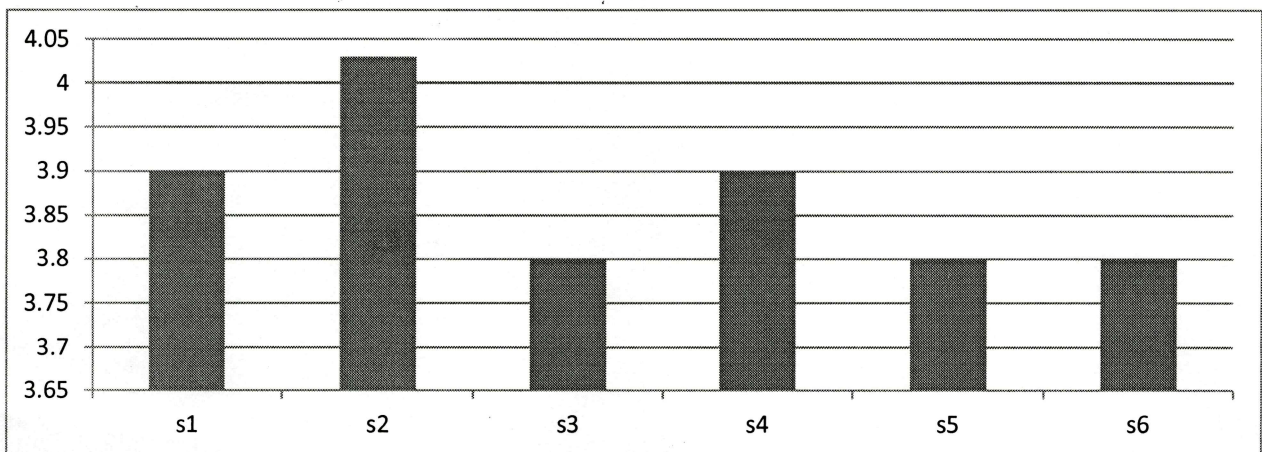



Faculty feedback Analysis on Curriculum

| | |
|---------------|------------------------|
| Department | Mechanical Engineering |
| Academic Year | 2022-23 |

Rating Score: Excellent (5), Very Good (4), Good (3), Average (2), Poor (1)

| S.No | Statements | 5 | 4 | 3 | 2 | 1 | AVG |
|------|---|----|----|----|----|---|------|
| 1 | Curriculum relevance to the course | 45 | 30 | 20 | 10 | 3 | 3.9 |
| 2 | Course content followed by corresponding reference books/materials | 46 | 32 | 20 | 8 | 2 | 4.03 |
| 3 | The course/syllabus has good balance between theory and laboratories. | 42 | 28 | 23 | 11 | 4 | 3.8 |
| 4 | The course/syllabus of this subject increased my knowledge and perspective in the subject | 45 | 27 | 20 | 13 | 3 | 3.9 |
| 5 | The Course/Program of studies carries sufficient number of optional subjects. | 43 | 31 | 19 | 10 | 5 | 3.8 |
| 6 | Organization support for research activities, paper publication etc. | 40 | 35 | 18 | 10 | 5 | 3.8 |




PRINCIPAL
A.G.M Rural College of
Engineering And Technology
Navagrah Teerth, VARUR-581 207

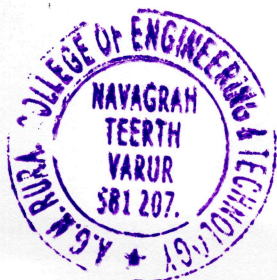


Faculty Feedback Analysis on Ambience

| | |
|---------------|-------------------|
| Department | Civil Engineering |
| Academic Year | 2022-2023 |

Rating Score: Excellent (5), Very Good (4), Good (3), Average (2), Poor (1)

| S.No | Statements | 5 | 4 | 3 | 2 | 1 | AVG |
|---------------------------------|---------------------------------|---|---|---|---|---|-----|
| Institutional Facilities | | | | | | | |
| 1 | Library Facilities | 4 | 1 | 2 | 2 | 1 | 3.5 |
| 2 | Central Computing Center | 6 | 1 | 1 | 2 | 0 | 4.1 |
| 3 | Training and Placement | 5 | 1 | 2 | 1 | 1 | 3.8 |
| 4 | Sports and Games | 5 | 4 | 1 | 0 | 0 | 4.4 |
| 5 | Literary Activities | 7 | 1 | 1 | 1 | 0 | 4.4 |
| Department Facilities | | | | | | | |
| 1 | Laboratory Infrastructure | 4 | 2 | 3 | 1 | 0 | 3.9 |
| 2 | Laboratory Equipment's | 5 | 1 | 1 | 2 | 1 | 3.7 |
| 3 | Department Library | 6 | 1 | 1 | 1 | 1 | 4 |
| 4 | Classrooms | 3 | 2 | 3 | 1 | 1 | 3.5 |
| General Amenities | | | | | | | |
| 1 | Facilities for Physical fitness | 4 | 4 | 1 | 1 | 0 | 4.1 |
| 2 | Medical / First Aid | 5 | 1 | 2 | 1 | 1 | 3.8 |
| 3 | Safety Measures | 6 | 1 | 2 | 0 | 1 | 4.1 |
| 4 | Wi-Fi Connectivity | 3 | 2 | 2 | 1 | 2 | 3.3 |
| 5 | E-learning resources | 4 | 3 | 1 | 1 | 1 | 3.8 |



PRINCIPAL
A.G.M Rural College of
Engineering And Technology
Navagrah Teerth, VARUR-581 207




Faculty feedback Analysis on Ambience

| | |
|---------------|----------------------------------|
| Department | Computer science and engineering |
| Academic Year | 2022 -2023 |

Rating Score: Excellent (5), Very Good (4), Good (3), Average (2), Poor (1)

| S.No | Statements | 5 | 4 | 3 | 2 | 1 | AVG |
|---------------------------------|---------------------------------|---|---|---|---|---|-----|
| Institutional Facilities | | | | | | | |
| 1 | Library Facilities | 8 | 0 | 1 | 0 | 1 | 4.3 |
| 2 | Central Computing Center | 7 | 2 | 1 | 0 | 0 | 4.6 |
| 3 | Training and Placement | 6 | 1 | 1 | 1 | 1 | 4 |
| 4 | Sports and Games | 8 | 0 | 0 | 1 | 1 | 4.3 |
| 5 | Literary Activities | 7 | 1 | 0 | 1 | 1 | 4.2 |
| Department Facilities | | | | | | | |
| 1 | Laboratory Infrastructure | 8 | 1 | 1 | 0 | 1 | 4.4 |
| 2 | Laboratory Equipment's | 6 | 1 | 2 | 1 | 0 | 4.6 |
| 3 | Department Library | 6 | 1 | 1 | 1 | 1 | 4 |
| 4 | Classrooms | 7 | 2 | 0 | 1 | 0 | 4.3 |
| General Amenities | | | | | | | |
| 1 | Facilities for Physical fitness | 8 | 1 | 0 | 1 | 0 | 4.6 |
| 2 | Medical / First Aid | 7 | 2 | 1 | 0 | 0 | 4.6 |
| 3 | Safety Measures | 6 | 2 | 1 | 0 | 1 | 4.2 |
| 4 | Wi-Fi Connectivity | 6 | 1 | 1 | 1 | 1 | 4 |
| 5 | E-learning resources | 7 | 1 | 1 | 0 | 1 | 4.3 |




PRINCIPAL
A.G.M Rural College of
Engineering And Technology
Navagrah Teerth, VARUR-581 207



S.D.M Jainmatt Trust®

A.G.M RURAL COLLEGE OF ENGINEERING AND TECHNOLOGY, VARUR



Faculty Feedback Analysis on Ambience

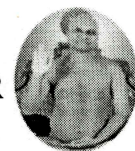
| | |
|---------------|---|
| Department | Electronics and Communication Engineering |
| Academic Year | 2022-2023 |

Rating Score: Excellent (5), Very Good (4), Good (3), Average (2), Poor (1)

| S.No | Statements | 5 | 4 | 3 | 2 | 1 | AVG |
|---------------------------------|---------------------------------|---|---|---|---|---|------|
| Institutional Facilities | | | | | | | |
| 1 | Library Facilities | 3 | 3 | 2 | 1 | 1 | 3.60 |
| 2 | Central Computing Center | 2 | 2 | 3 | 2 | 1 | 3.20 |
| 3 | Training and Placement | 4 | 2 | 2 | 1 | 1 | 3.70 |
| 4 | Sports and Games | 4 | 2 | 2 | 1 | 1 | 3.70 |
| 5 | Literary Activities | 2 | 2 | 4 | 1 | 1 | 3.30 |
| Department Facilities | | | | | | | |
| 1 | Laboratory Infrastructure | 3 | 3 | 2 | 1 | 1 | 3.60 |
| 2 | Laboratory Equipment's | 2 | 2 | 3 | 1 | 2 | 3.10 |
| 3 | Department Library | 3 | 3 | 1 | 2 | 1 | 3.50 |
| 4 | Classrooms | 4 | 2 | 2 | 1 | 1 | 3.70 |
| General Amenities | | | | | | | |
| 1 | Facilities for Physical fitness | 2 | 4 | 1 | 1 | 2 | 3.30 |
| 2 | Medical / First Aid | 4 | 2 | 1 | 1 | 2 | 3.50 |
| 3 | Safety Measures | 3 | 3 | 2 | 1 | 1 | 3.60 |
| 4 | Wi-Fi Connectivity | 2 | 1 | 2 | 3 | 2 | 2.80 |
| 5 | E-learning resources | 2 | 3 | 2 | 2 | 1 | 3.30 |



A.G.M Rural College
Engineering And Technology
Navagrah Teerth, VARUR-581 207




Faculty feedback Analysis on Ambience

| | |
|---------------|--|
| Department | Electrical and Electronics Engineering |
| Academic Year | 2022-23 |

Rating Score: Excellent (5), Very Good (4), Good (3), Average (2), Poor (1)

| S.No | Statements | 5 | 4 | 3 | 2 | 1 | AVG |
|---------------------------------|---------------------------------|---|---|---|---|---|------|
| Institutional Facilities | | | | | | | |
| 1 | Library Facilities | 4 | 3 | 0 | 0 | 0 | 4.58 |
| 2 | Central Computing Center | 2 | 2 | 1 | 1 | 1 | 3.43 |
| 3 | Training and Placement | 3 | 3 | 1 | 0 | 0 | 4.29 |
| 4 | Sports and Games | 5 | 2 | 0 | 0 | 0 | 4.72 |
| 5 | Literary Activities | 2 | 3 | 1 | 1 | 0 | 3.86 |
| Department Facilities | | | | | | | |
| 1 | Laboratory Infrastructure | 4 | 2 | 1 | 0 | 0 | 4.43 |
| 2 | Laboratory Equipment's | 3 | 4 | 0 | 0 | 0 | 4.43 |
| 3 | Department Library | 2 | 2 | 1 | 1 | 1 | 3.43 |
| 4 | Classrooms | 5 | 2 | 1 | 0 | 0 | 4.5 |
| General Amenities | | | | | | | |
| 1 | Facilities for Physical fitness | 5 | 1 | 1 | 0 | 0 | 4.58 |
| 2 | Medical / First Aid | 4 | 2 | 1 | 0 | 0 | 4.43 |
| 3 | Safety Measures | 3 | 2 | 1 | 1 | 0 | 4.00 |
| 4 | Wi-Fi Connectivity | 3 | 4 | 0 | 0 | 0 | 4.43 |
| 5 | E-learning resources | 4 | 2 | 1 | 0 | 0 | 4.43 |




PRINCIPAL
A.G.M Rural College of
Engineering And Technology
Navagrah Teerth, VARUR-581 207



S.D.M Jainmatt Trust®

A.G.M RURAL COLLEGE OF ENGINEERING AND TECHNOLOGY, VARUR

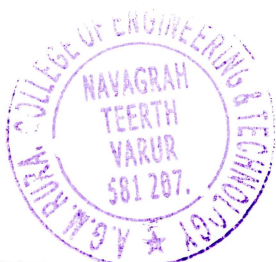


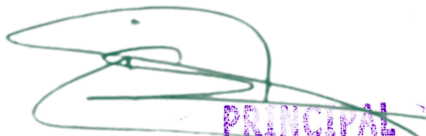
Faculty feedback Analysis on Ambience

| | |
|---------------|------------------------|
| Department | Mechanical Engineering |
| Academic Year | 2022-23 |

Rating Score: Excellent (5), Very Good (4), Good (3), Average (2), Poor (1)

| S.No | Statements | 5 | 4 | 3 | 2 | 1 | AVG |
|---------------------------------|---------------------------------|---|---|---|---|---|-----|
| Institutional Facilities | | | | | | | |
| 1 | Library Facilities | 3 | 2 | 1 | 1 | 1 | 3.6 |
| 2 | Central Computing Center | 2 | 2 | 2 | 1 | 1 | 3.3 |
| 3 | Training and Placement | 4 | 1 | 1 | 1 | 1 | 3.7 |
| 4 | Sports and Games | 3 | 2 | 1 | 1 | 1 | 3.6 |
| 5 | Literary Activities | 4 | 1 | 1 | 1 | 1 | 3.7 |
| Department Facilities | | | | | | | |
| 1 | Laboratory Infrastructure | 5 | 2 | 1 | 1 | 1 | 3.9 |
| 2 | Laboratory Equipment's | 4 | 2 | 2 | 1 | 1 | 3.7 |
| 3 | Department Library | 3 | 2 | 2 | 2 | 1 | 3.4 |
| 4 | Classrooms | 6 | 1 | 1 | 1 | 1 | 4 |
| General Amenities | | | | | | | |
| 1 | Facilities for Physical fitness | 5 | 2 | 1 | 1 | 1 | 3.9 |
| 2 | Medical / First Aid | 6 | 1 | 1 | 1 | 1 | 4 |
| 3 | Safety Measures | 4 | 2 | 2 | 1 | 1 | 3.7 |
| 4 | Wi-Fi Connectivity | 3 | 2 | 2 | 2 | 1 | 3.4 |
| 5 | E-learning resources | 3 | 3 | 2 | 1 | 1 | 3.6 |




PRINCIPAL
A.G.M Rural College of
Engineering And Technology
Navagrah Teerth, VARUR-501 207